

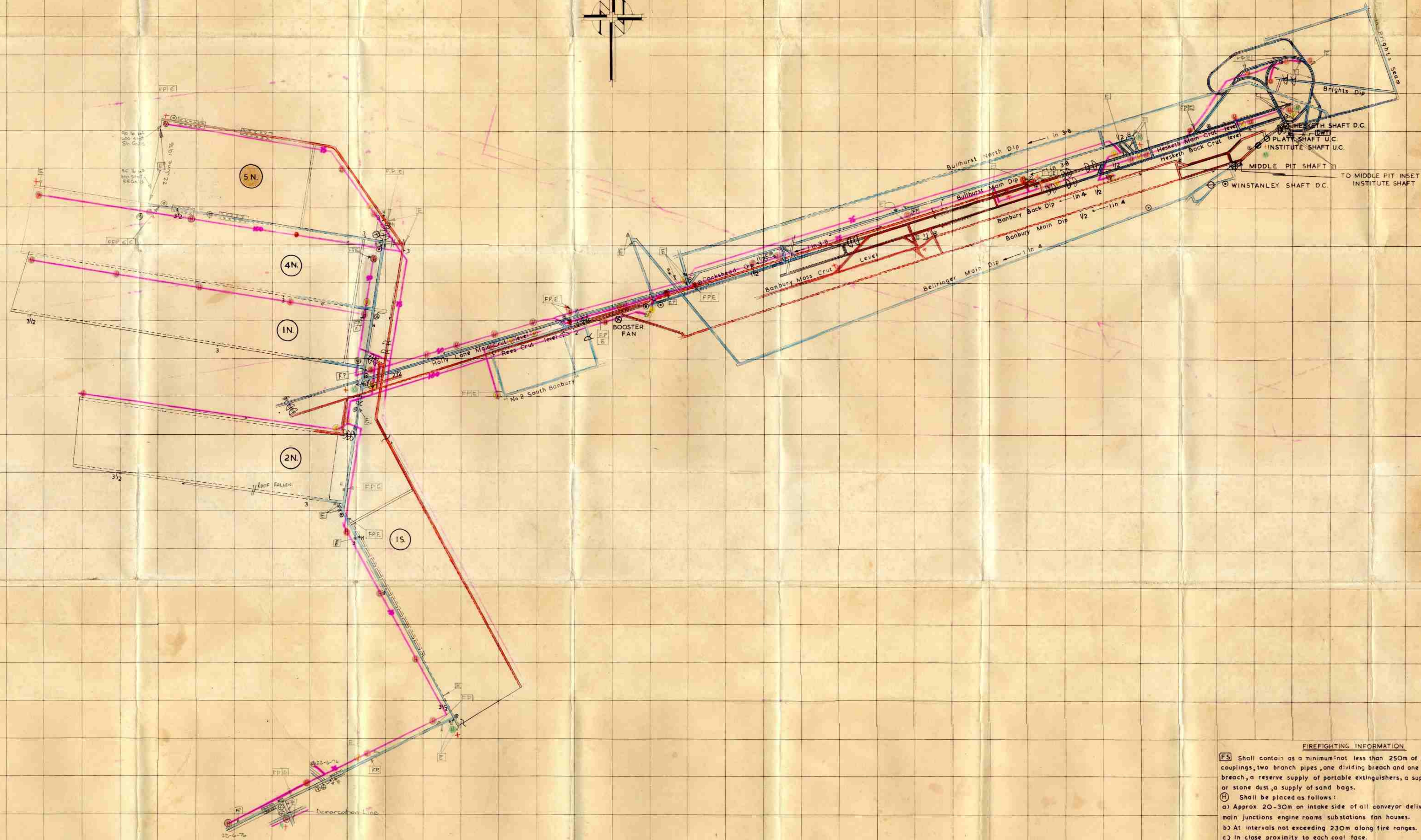
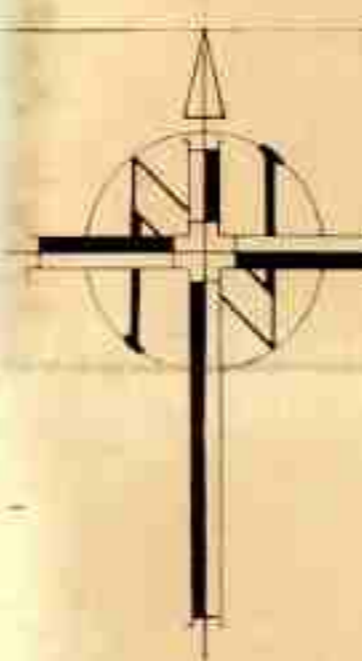
CHATTERLEY WHITFIELD COLLIERY

FIREFIGHTING & RESCUE PLAN

HARDMINE SEAM

HARDMINE SEAM

DD  
CC  
BB  
AA  
Z  
Y  
X  
W  
V  
U  
T  
S  
R  
Q  
P  
O  
N  
M  
L  
K  
J  
I  
H  
G  
F  
E  
D  
C  
B  
A



**FIREFIGHTING INFORMATION**

[FS] Shall contain as a minimum not less than 250m of hose with couplings, two branch pipes, one dividing branch and one collecting branch, a reserve supply of portable extinguishers, a supply of sand or stone dust, a supply of sand bags.

[H] Shall be placed as follows:  
a) Approx 20-30m on intake side of all conveyor delivery points main junctions engine rooms substations fan houses.  
b) At intervals not exceeding 230m along fire ranges.  
c) In close proximity to each coal face.

[FD] Shall be provided at fire hydrant position (a) above and shall contain: at least five lengths of hose and one branch pipe.

[FFP] Shall be provided at fire hydrant position (c) above and shall contain: sufficient length of hose to reach the ends of the coal face and one branch pipe.

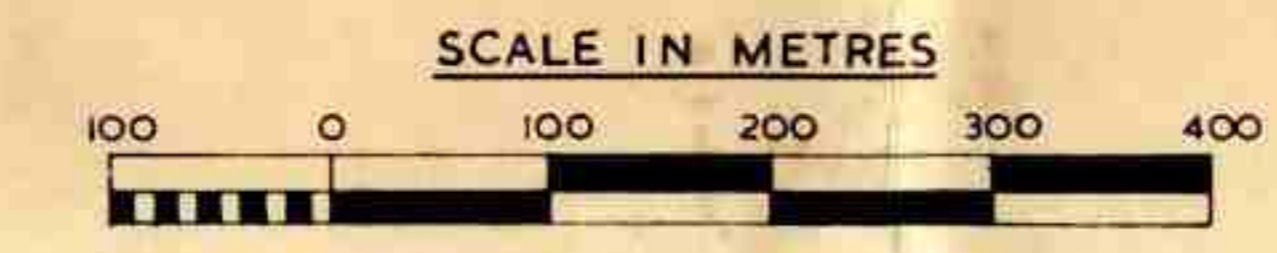
[E] Placed on intake side of all fixed electrical apparatus and each unit shall consist of: one CO<sub>2</sub> extinguisher, one foam extinguisher, a bucket of sand or stone dust, or two dry powder extinguishers, and a bucket of sand or stone dust. Where considered necessary due to quantity of equipment two or more units may be provided in which case the symbol E would be repeated for each unit e.g. [EE].

FP Shown at inbye end of all fire mains in 1000 N/m<sup>2</sup> (145 lbs/sq in)

351 000 1 2 3 4 5 6 7 8 9 10 11 12 13 14 15 16 17 18 19 20 21 22 23 24 25 26 27 28 29 30 31 32 33 34 35 36 37 38 39 40 41 42 43 44 45

**REFERENCE**

- |                                                   |                             |                                                  |                                           |
|---------------------------------------------------|-----------------------------|--------------------------------------------------|-------------------------------------------|
| Brick Stone or Concrete Stopping explosion proof  | Auxiliary Fans              | Distance from Shaft in Kilometres (0.6214 Miles) | Emergency Drinking Water Tanks            |
| Brick Stone or Concrete Stopping other than above | First Aid Stations (in Red) | Site for Emergency Stopping (Prepared Site)      | Face Number (Coloured Brown When Working) |
| Fire Dams or Seals                                | Morphia Stations            | (Selected Site)                                  | Fire Hydrants                             |
| Doors                                             | Stone Drifts                | Loading Points                                   | Water Pressure Reducing Valves            |
| Regulators                                        | Roads in Goaf               | Transfer Points                                  | Water Stop Valves                         |
| Cloth                                             | Roads in Goaf One Fast Side | Haulages                                         | Pipe Column with Diameter in millimetres  |
| Air Crossing explosion proof                      | Roads in Solid              | Transformers                                     | Flow Pressure                             |
| Air Crossing other than above                     | Stowed Roads                | Pumps                                            | Fire Points                               |
| Intake Airways 'BLUE'                             | Drawn off Roads             | Stone Dust Barriers (Primary)                    | Face Fire Points                          |
| Return Airways 'RED'                              | Staple Shafts               | (Secondary)                                      | Portable Extinguishers - UNITS            |
| Direction of Air Current (red or blue arrows)     | Staple Shafts Abandoned     | Emergency Sand Dumps                             | Fire Station                              |
| Telephones                                        | Rate and Direction of Dip   | Emergency Stone Dust Dumps                       | St.D                                      |



PLAN GRIDDED IN 100 M SQUARES

Certified that information shown on this plan is correct  
R.S. Mason  
Fire Fighting Officer  
Agent Manager  
Plan made up to date

**NATIONAL COAL BOARD WESTERN AREA  
CHATTERLEY WHITFIELD COLLIERY  
RESCUE AND FIREFIGHTING PLAN**

**HARDMINE SEAM**

SCALE 1/5000