

CHATTERLEY WHITFIELD COLLIERY

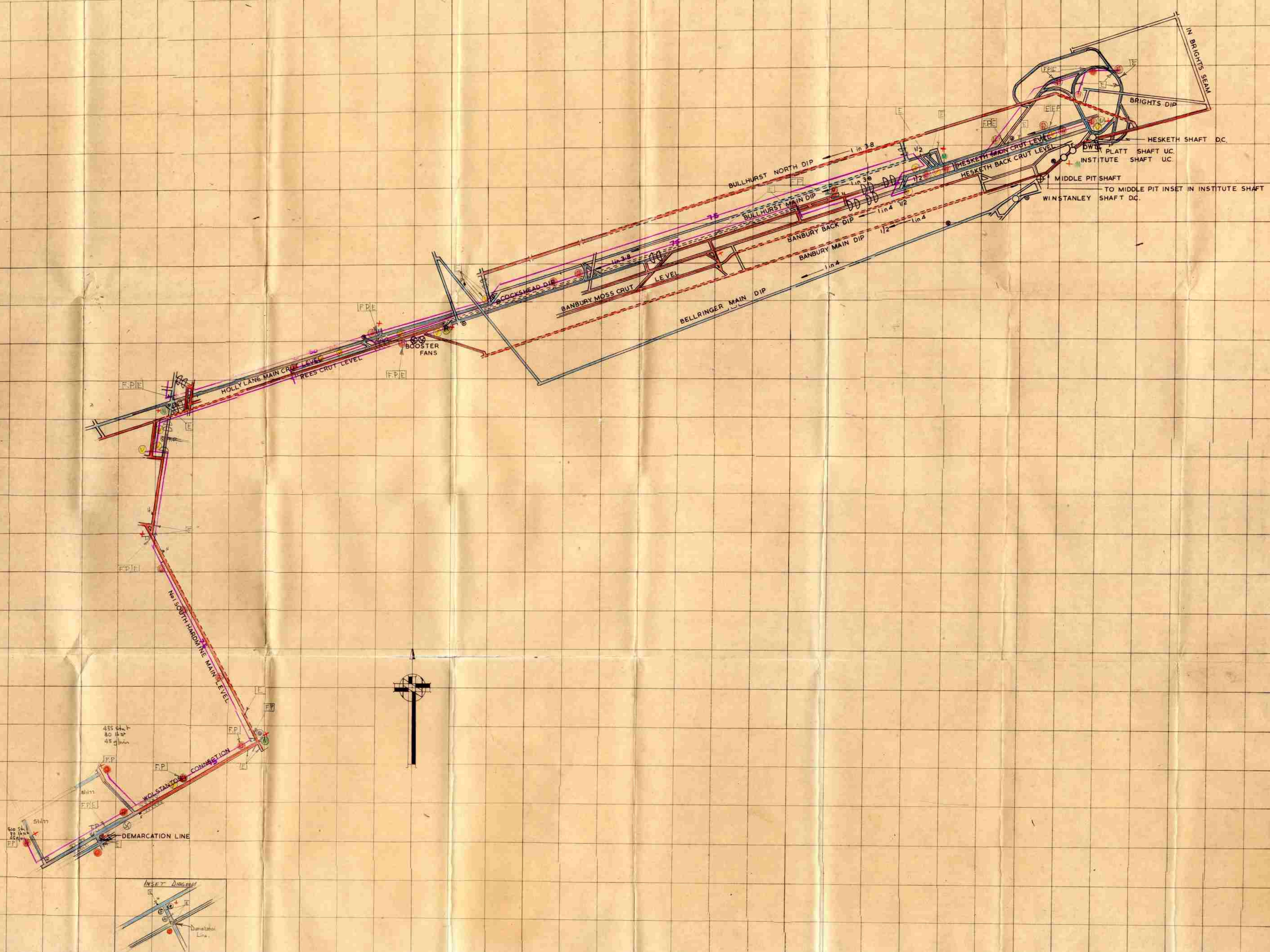
FIREFIGHTING & RESCUE PLAN

HOLLY LANE SEAM

HOLLY LANE SEAM

FF
EE
DD
CC
BB
AA

Z
Y
X
W
V
U
T
S
R
Q
P
O
N
M
L
K
J
H
G
F
E
D
C
B
A



WORKINGS CORRECT AND UP TO DATE		INFORMATION SHOWN ON PLAN CORRECT AND UP TO DATE		PLAN APPROVED	
COLLIERY SURVEYOR	COLLIERY SAFETY OFFICER	COLLIERY VENTILATION OFFICER	COLLIERY AGENT/MANGR	COLLIERY SURVEYOR	COLLIERY SAFETY OFFICER
DATE	SIGNATURE	DATE	SIGNATURE	DATE	SIGNATURE
24/7/21	<i>[Signature]</i>	24/7/21	<i>[Signature]</i>	24/7/21	<i>[Signature]</i>
24/7/21	<i>[Signature]</i>	24/7/21	<i>[Signature]</i>	24/7/21	<i>[Signature]</i>
24/7/21	<i>[Signature]</i>	24/7/21	<i>[Signature]</i>	24/7/21	<i>[Signature]</i>
24/7/21	<i>[Signature]</i>	24/7/21	<i>[Signature]</i>	24/7/21	<i>[Signature]</i>

FIREFIGHTING INFORMATION

ES Shall contain as a minimum: not less than 250m of hose with couplings two branch pipes one dividing branch and one collecting branch, a reserve supply of portable extinguishers a supply of sand or stone dust a supply of sand bags.

ⓐ Shall be placed as follows:
a) Approx 20-30m on intake side of all conveyor delivery points, main junctions, engine rooms, substations, fan houses.
b) At intervals not exceeding 230m along fire ranges.
c) In close proximity to each coal face.

FP Shall be provided at fire hydrant positions a above and shall contain: at least five lengths of hose and one branch pipe.

FPF Shall be provided at fire hydrant position (c) above and shall contain: sufficient length of hose to reach the ends of the coal face and one branch pipe.

E Placed on intake side of all fixed electrical apparatus and each unit shall consist of: one CO₂ extinguisher one foam extinguisher, a bucket of sand or stone dust or two dry powder extinguishers, and a bucket of sand or stone dust. Where considered necessary due to quantity of equipment two or more units may be provided in which case the symbol E would be repeated for each unit e.g. **EE**

FP Shown at intake end of all fire mains in 1000 N/m² (0.145 lbs/sq in)

REFERENCE

- Brick Stone or Concrete Stopping explosion proof
- Brick Stone or Concrete Stopping other than above
- Fire Dams or seals
- Doors
- Regulators
- Cloth
- Air Crossing explosion proof
- Air Crossing other than above
- Intake Airways BLUE
- Return Airways RED
- Direction of Air Current (red or blue arrows)
- Telephones
- Auxiliary Fans
- First Aid Stations (in Red)
- Morphia Stations
- Stone Drifts
- Roads in Goaf
- Roads in Goaf One Fast Side
- Roads in Solid
- Stowed Roads
- Drawn off Roads
- Staple Shafts
- Staple Shafts Abandoned
- Rate and Direction of Dip
- Distance from Shaft in Kilometres (0.6214 Miles)
- Site for Emergency Stopping (Prepared Site)
- (Selected Site)
- Loading Points
- Transfer Points
- Haulages
- Transformers
- Pumps
- Stone-Dust Barriers (Primary)
- (Secondary)
- Emergency Sand Dumps
- Emergency Stone Dust Dumps
- Emergency Drinking Water Tanks
- Face Number (Coloured Brown When Working)
- Fire Hydrants
- Water Pressure Reducing Valves
- Water Stop Valves
- Pipe Column with Diameter in millimetres
- Flow Pressure
- Fire Points
- Face Fire Points
- Portable Extinguishers
- Fire Station

SCALE IN METRES

100 0 100 200 300 400

PLAN GRIDDED IN 100M SQUARES

UNITS

NATIONAL COAL BOARD WESTERN AREA
CHATTERLEY WHITFIELD COLLIERY
RESCUE AND FIREFIGHTING PLAN
HOLLY LANE SEAM
 SCALE — 1/5000